

TENSION STAR TS 205 R10

ELECTRONIC HAND HELD TENSION METER

- ❖ **Automatik** zero. Zero setting by push C in all measuring positions.
- ❖ Fast measuring head (400 Hz).At least 400 measurements per second.
- ❖ USB 2.0 PC Connection with full measuring speed.
- ❖ Digital measuring for highest accuracy.
- ❖ Display average update selectable from 0.5 Second up to 10 Seconds. Average extension calculation indication.
- ❖ Easy calibration. All **Tension Star** are supply with calibration protocol off the Factory settings. Factory setting are locked and saved.
- ❖ Calibration of 8 different material curves.
- ❖ Gain access from customer site off all material
- ❖ Standard communication and online data aquisition over USB 2.0 connection.
- ❖ Online Tension Star Software for data collection and analyses.
- ❖ Scroll/Edit lock over PC Setup enable/lock. The operator can not change any setting.

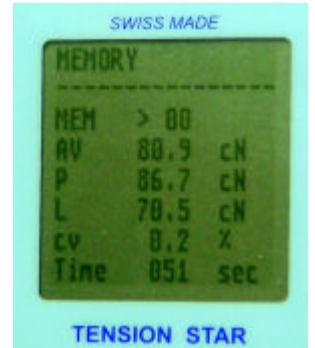
Model	Messbereich
TS 205 R10 200	0.1 - 200 cN (2N)
TS 205 R10 400	0.1 - 400 cN (4N)
TS 205 R10 1000	0.1 - 1000 cN (10)



MEMory mode Display



100 Memory
Average
Peak
Low
 cv%
 measuring time



PC - Graphic Display with Zoom-, Save-, Print-, Setup-Function



Accu charging and data transfer over USB plug. Optional charger available



The **TENSION STAR** is lighth, has a long live and is easy to use.

Netweight: 426 Gramm

TENSION STAR TS 205 R10

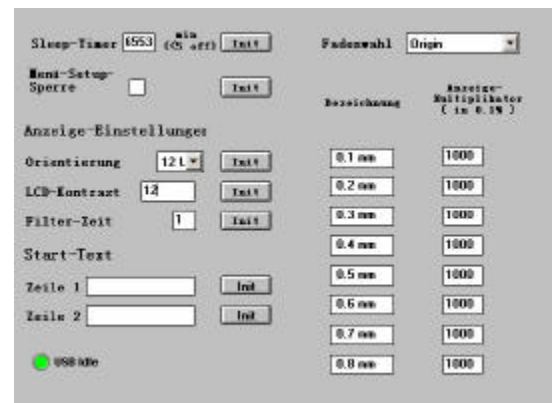
Technical data

Measuring range:	According selected model max. measuring range 1000 cN
Dissolution:	0.1 mN, cN, N, kN range 0 to 999.9 then 9999
Accuracy:	Factory set up +/- 1% = $(1 - \text{rated value} / \text{Indication}) \times 100$,
Display:	LCD Graphic Display 9 mm letter
Measuring frequency:	400 Hz = 400 measurments per second
Idication:	Standard display mode (app. 120 Hz value indication) Battery low. Sleep mode
Measuring mode:	direct digital mode
Memory:	MEMory 000 up to 999 number AV Scatter value Peak , Low , cv% and time'r memory. Full on memory measuring time over 27 hour's.
Digital outlet:	USB 2.0 connection for online measuring, setup, data transfer and ACCU charging.
Consumption:	0.09 W
Power source:	6 AAA 1.2 Volt ACCU
Enclosed:	Carring case, Manual and test report, Basic Software for Windows, USB connecting cable.
Accessories:	USB charger, Software update for additonal analysis.
V-Roller:	R10 3000 m/min Steel CrNi coated (standard) other roller are available to

Setup at the instrument Display and PC



- ♣ Display darkness settings.
- ♣ View direction 4 positions 90° turn. Better overview on display and roller. You measure at your view.
- ♣ Gain setting at all curves 1 to 8. Factory setup is fixed and set the calibration curve.
- ♣ Setup lock on/off over USB-PC. For protection on gain play.



Technical modification or improvements are always allowed without preinformation.