

TENSION STAR TS 205 R15 CM

ELECTRONIC HAND HELD TENSION METER

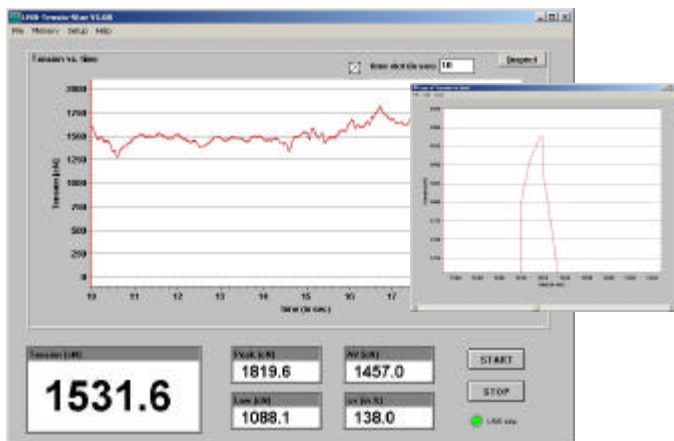
- ♣ **Automatik** zero. Zero setting by push C in all measuring positions.
- ♣ Fast measuring head (600 Hz and more). At least 600 measurements per second.
- ♣ USB 2.0 PC Connection with full measuring speed.
- ♣ Digital measuring for highest accuracy.
- ♣ Display average update selectable from 0.5 Second up to 10 Seconds. Average extension calculation indication.
- ♣ 100 Memory of **A**verage, **P**eak, **L**ow, **cv**% and measuring time.

- ♣ Easy calibration. All **Tension Star** are supply with calibration protocol off the Factory settings. Factory setting are locked and saved.
- ♣ Calibration of 8 different material curves.
- ♣ Gain access from customer site off all material curves.

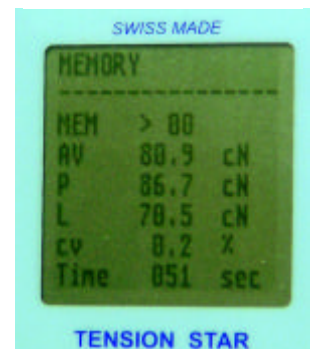
Model	Messbereich
TS 205 R15 CM 2000	0.1 - 2000 cN
TS 205 R15 CM 5000	0.1 - 5000 cN
TS 205 R15 CM 100N	0.1 - 100 N
TS 205 R15 CM 250N	0.1 - 250.0 N
TS 205 R15 CM 500N	0.1 - 500.0 N
TS 205 R15 CM 500N	0.1 - 999.9 N



PC - Graphic Display
with Zoom-, Save-, Print- &
Setup- Function



MEMORY Display



- ♣ Standard communication and online data acquisition over USB 2.0 connection.
- ♣ Online Tension Star Software for data collection and analyses.
- ♣ Scroll/Edit lock over PC Setup enable/lock. The operator can not change any setting.



Netweight: 426 Gramm

- ♣ The **TENSION STAR** is light, has a long life and is easy to use.

- ♣ Accu charging and data transfer over USB plug. Optional charger available

TENSION STAR TS 205 R15 CM

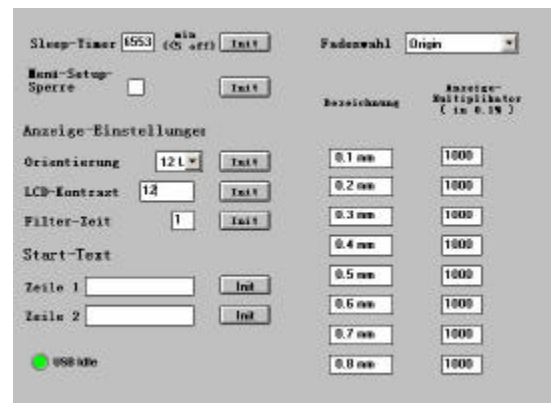
Technical data

Measuring range:	According selected model max. measuring range 1000 N
Dissolution:	0.1 mN, cN, N, kN range 0 to 999.9 then 9999
Accuracy:	Factory set up +/- 1% = $(1 - \text{rated value} / \text{Indication}) \times 100$,
Display:	LCD Graphic Display 9 mm letter
Measuring frequency:	600 Hz = 600 measurements per second
Indication:	Standard (120 Hz value indication) Memory Display Battery low. Sleep mode
Measuring mode:	direct digital mode
Memory:	MEMory 00 up to 999 number for AV Scatter value , Peak , Low , cv% and time channel. Full on memory measuring time over 27 hour's.
Digital outlet:	USB 2.0 connection for online measuring, setup, data transfer and ACCU pack charging.
Consumption:	0.09 W
Power source:	6 AAA 1.2 Volt ACCU
Enclosed:	Carring case, Manual and test report, Software for Windows, USB connecting cable.
Accessories:	USB power charger
V-Roller:	Standard 2000 m/min Alu hardcoated R15 K 3500 m/min Alu hardcoated R15 H 5000 m/min Alu hardcoated Steel, POM, Ceramic are available to

Setup at the instrument Display and PC



- ♣ Display darkness settings.
- ♣ View direction 4 positions 90° turn. Better overview on display and roller. You measure at your view.
- ♣ Gain setting at all curves 1 to 8. Factory setup is fixed and set the calibration curve.
- ♣ Setup lock on/off over USB-PC. For protection on gain play.



Technical modification or improvements are always allowed without preinformation.