

TENSION STAR TS 205 R15

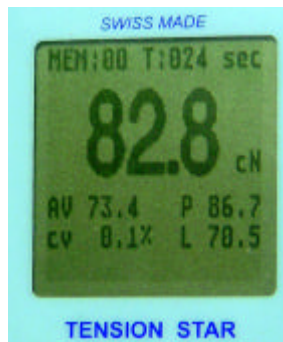
ELECTRONIC HAND HELD TENSION METER

- ❖ **Automatik** zero. Zero setting by push C in all measuring positions.
- ❖ Fast measuring head (600 Hz and more). At least 600 measurements per second.
- ❖ USB 2.0 PC Connection with full measuring speed.
- ❖ Digital measuring for highest accuracy.
- ❖ Display average update selectable from 0.5 Second up to 10
- ❖ Easy calibration. All **Tension Star** are supply with calibration protocol off the Factory settings. Factory setting are locked and saved.
- ❖ Calibration of 8 different material curves.
- ❖ Gain access from customer site off all material curves.
- ❖ Standard communication and online data acquisition over USB 2.0 connection.
- ❖ Online Tension Star Software for data collection and analyses.
- ❖ Scroll/Edit lock over PC Setup enable/lock. The operator can not change any setting.

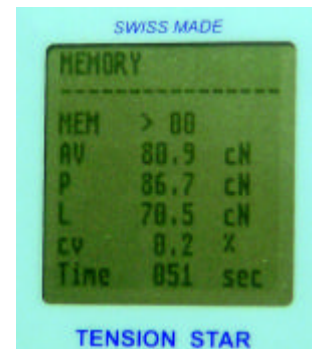
Model	Messbereich
TS 205 R15 200	0.1 - 200 cN
TS 205 R15 500	0.1 - 500 cN
TS 205 R15 1000	0.1 - 1000 cN
TS 205 R15 2000	0.1 - 2000 cN
TS 205 R15 2500	0.1 - 2500 cN
TS 205 R15 5000	0.1 - 5000 cN



Indication letters 9 mm



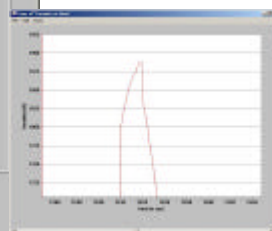
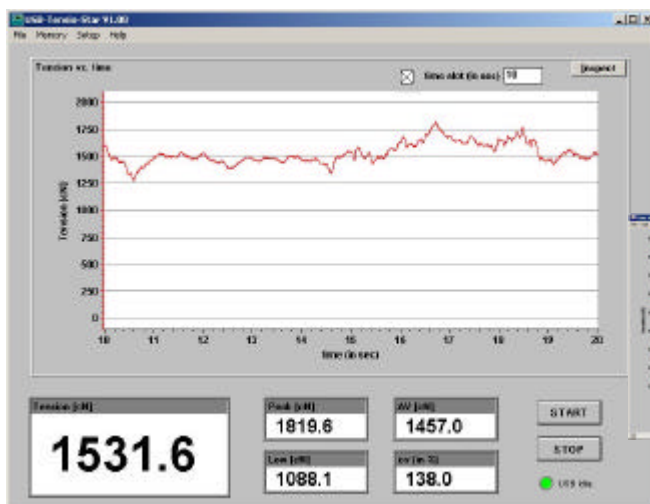
MEMORY Display



100 Memory
Average
Peak
Low,
cv%
 measuring time.

Accu charging and data transfer over USB plug.
 Optional charger available

PC - Graphic Display with Zoom-, Save-, Print-, Setup-Function



- ❖ The **TENSION STAR** is light, has a long life and is easy to use.

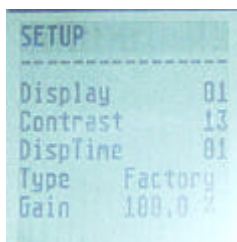
Netweight: 426 Gramm

TENSION STAR TS 205 R15

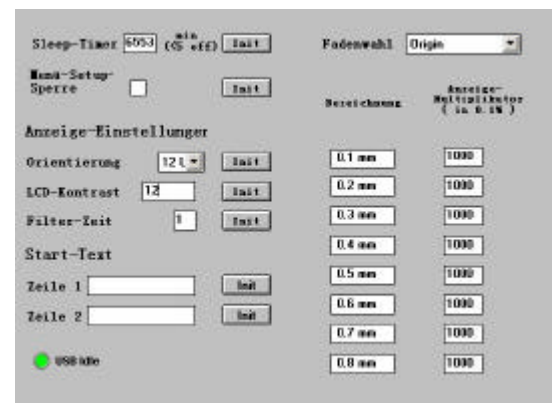
Technical data

Measuring range:	According selected model max. measuring range 1000 N
Dissolution:	0.1 mN, cN, N, kN range 0 to 999.9 then 9999
Accuracy:	Factory set up +/- 1% = (1 - rated value / Indication) x 100,
Display:	LCD Graphic Display 9 mm letter
Measuring frequency:	600 Hz = 600 measurments per second
Indication:	Stadard display (app. 120 Hz value indication) MEM ory display Battery low. Sleep mode
Measuring mode:	direct digital mode
Memory:	MEM ory 00 up to 999 number AV Scatter value Peak , Low , cv% and time channel. Full on memory measuring time over 27 hour's.
Digital outlet:	USB 2.0 connection for online measuring, setup, data transfer and ACCU charging.
Consumption:	0.09 W
Power source:	6 AAA 1.2 Volt ACCU
Enclosed:	Carring case, Manual and test report, Software for Windows, USB connecting cable.
Accessories:	MP3 USB power supply, additional extension memory, Software update for additional analysis.
V-Roller:	2000 m/min Alu hardcoated
Standart	3500 m/min Alu hardcoated
	R15 K 5000 m/min Alu hardcoated
	R15 H Steel, POM, Ceramic are available to

Setup at the instrument Display and PC



- ♣ Display darkness settings.
- ♣ View direction 4 positions 90° turn. Better overview on display and roller. You measure at your view.
- ♣ Gain setting at all curves 1 to 8. Factory setup is fixed and set the calibration curve.
- ♣ Setup lock on/off over USB-PC. For protection on gain play.



Technical modification and improvements are always allowed without preinformation.